

A tropical beach scene at sunset. The sky is filled with soft, colorful clouds in shades of pink, orange, and blue. In the foreground, there are dark, jagged rocks along the shoreline. To the left, a palm tree leans over the rocks. The ocean waves are gently washing onto the sandy beach.

Hawaii

TROPICAL ADVENTURE

OAHU + MAUI

FEBRUARY 2027

WITH DEZ, KS95 MORNING SHOW RADIO HOST



Welina mai i Hawai'i

Welcome to Hawai'i

Join Dez from the KS95 Morning Show as we travel to the tropical Islands of Hawai'i!

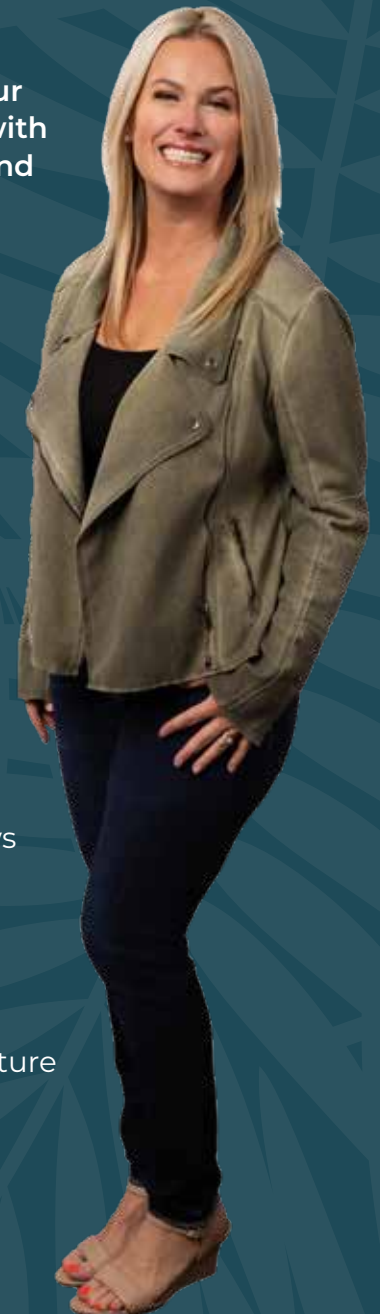
Discover the beauty, culture and adventures waiting for you on the Hawaiian Islands. Hawai'i is renowned for its natural beauty, but the culture and heritage of the islands are equally enticing and waiting to be explored. Whether you're intrigued by tropical adventure, secluded luxury or cultural immersion, Hawai'i has something for everyone.

Dez will be featuring the Island of Maui as the main highlight and inclusion of our tour program, and you can begin your travels with an optional pre-stay to experience Oahu and Waikiki as well.

O'AHU Sometimes called "The Gathering Place," O'ahu certainly lives up to its name. The third largest Hawaiian island is home to the majority of Hawai'i's diverse population, a fusion of East and West cultures rooted in the values and traditions of the Native Hawaiian people. It's this fundamental contrast between the ancient and the modern that makes discovering O'ahu — from bustling city life to laidback surf towns — so enjoyable.

MAUI Known also as "The Valley Isle," Maui is the second largest Hawaiian island. The island is beloved for its world-famous beaches, the sacred 'Iao Valley, views of migrating humpback whales (during winter months), farm-to-table cuisine, and the magnificent sunrise and sunset from Haleakalā.

Join Dez and Carrousel Travel on this adventure so you don't miss out on all of the fun!



MAIN KS95 TOUR

MAUI

FEBRUARY 8-13, 2027



WAIKIKI
O'AHU

KĀ'ANAPALI
MAUI

PRE-TOUR EXTENSION

O'AHU

FEBRUARY 5-8, 2027



When you go to Hawai'i, it's all about 'Aloha.'
It means hello, goodbye and I love you.

GABRIEL IGLESIAS



PRE-TOUR EXTENSION // FEBRUARY 5-8, 2027

O'AHU



OPTIONAL HANAUMA BAY EXPERIENCE

FEBRUARY 7 | 7:00 AM-12:00 PM | \$175 PER PERSON

Hanauma Bay Nature Preserve is one of O'ahu's most stunning natural treasures. Formed within a volcanic crater, this protected bay is known for its crystal-clear waters, vibrant coral reefs, and lush coastal scenery. Designated a Marine Life Conservation District, Hanauma Bay offers breathtaking views, serene sandy beaches, and educational exhibits that highlight Hawai'i's unique marine ecosystem—making it a must-see destination for visitors of all kinds.

Note: Hanauma Bay provides ADA-accessible restrooms and pathways to the beach lookout area. While the main facilities are wheelchair accessible, please note that beach access may be limited due to natural terrain.

Includes: Roundtrip transfers, driver narration, 4 hours of free time at Hanauma Bay, admission fee, gratuities and taxes.

TOUR INCLUSIONS

O'AHU

- Lei greeting upon arrival
- Roundtrip group transfers between the Honolulu Airport and your hotel
- Three nights accommodation at the Sheraton Waikiki Resort
- Full breakfast daily
- Private Historical Honolulu and Pearl Harbor tour
- Private group reception at the Sheraton Waikiki
- Special KS95 group inclusions at the Sheraton Waikiki
 - Complimentary rental of a GoPro Camera – one per room for one day
 - Ukulele lessons
 - Hula lessons
 - Lei making
 - Daily yoga
 - Aquasize Water Aerobics Classes

PRICING

O'AHU PACKAGE CITY VIEW ROOM

\$1,995 per person, based on double occupancy
\$2,850 per person, based on single occupancy

O'AHU PACKAGE RUN-OF-OCEAN ROOM

\$2,295 per person, based on double occupancy
\$3,225 per person, based on single occupancy

All prices are per person, based on stated occupancy and include items listed under tour inclusions.

TOUR HIGHLIGHT

HISTORIC HONOLULU & PEARL HARBOR TOUR

This unforgettable tour begins with a narrated tour of downtown Honolulu, where you will see the impressive state buildings and learn about 'Iolani Palace (the only royal palace on American soil), as well as visit the majestic statue of King Kamehameha (the great Hawaiian warrior-king who united the Islands), and the Hawai'i Capitol. Continue to the historic National Memorial Cemetery of the Pacific at Punchbowl, a historical landmark where we honor the many men and women who served in the Armed Forces. Next you will experience a visit to the Pearl Harbor Visitors Center, the largest visitor attraction on O'ahu, to take in the many exhibits and board a Navy boat shuttle for a tour of the harbor along battleship row, with the opportunity to disembark onto the USS Arizona Memorial. The USS Arizona Memorial, built in 1962, was declared in honor and commemoration of the members of the Armed Forces of the United States who gave their lives during the attack on Pearl Harbor. The United States Navy specified the memorial to be a bridge floating above the ship. Architect and designer Alfred Preis has explained "Wherein the structure sags in the center but stands strong and vigorous at the ends, expresses initial defeat and ultimate victory. The overall effect is one of serenity." Time will be spent on the Memorial with park rangers on hand to answer questions. The assembly room features large open windows to view the surrounding Pearl Harbor and Old Glory flying above the memorial. A viewing window in the memorial's floor allows guests to overlook the sunken decks and a marble wall bears the names of all those who gave their lives on the USS Arizona.

ACCOMMODATIONS

SHERATON WAIKIKI BEACH RESORT

Immerse yourself in the sunshine on Hawaii's awe-inspiring beaches at Sheraton Waikiki. This exceptional oceanfront resort features a prime location on the shores of Waikiki Beach just moments away from the area's top attractions, upscale shopping, family activities and exotic natural destinations, including the famed Diamond Head crater. After a long day of exploring Hawaii's amenities, relax in their beautifully-designed outdoor pools, work out in their modern fitness center, or dine in one of their unique restaurants with globally-inspired cuisine. In the evening, retreat to spacious beachfront accommodations with the pure white Sheraton Signature Sleep Experience, a fresh-air lanai and spectacular views. Welcome to an unforgettable island hotel at Sheraton Waikiki.



MAIN KS95 TOUR // FEBRUARY 8-13, 2027

MAUI





TOUR INCLUSIONS

MAUI

- Lei greeting upon arrival
- Roundtrip group transfers between the Maui Airport and your hotel
- Five nights accommodation at the Hyatt Regency Maui Resort and Spa
- Full breakfast daily
- Drums of the Pacific Luau including dinner and entertainment
- Private group sunset catamaran sail including cocktails and appetizers
- Private group whale watching excursion
- Private 'Īao Valley and Maui Ocean Center Tour
- Daily shuttle service to various locations in the Kā'anapali area
- Special KS95 group inclusions at the Hyatt Regency Maui Resort and Spa
 - Two reusable water bottles
 - Yoga/fitness classes
 - Two Drop-in/Open Play passes per room, per stay at The HUB Pickleball Maui (on property), with standard paddle
 - Hula lessons
 - Wildlife encounters
 - Penguin and koi feedings
 - Ukulele lessons
 - Lei making workshop
 - Rooftop stargazing
 - Cultural programs
 - Use of beach chairs and umbrellas

PRICING

MAUI PACKAGE

RUN-OF-HOUSE ROOM

\$4,450 per person, based on double occupancy

\$5,895 per person, based on single occupancy

MAUI PACKAGE

RUN-OF-OCEAN ROOM

\$4,575 per person, based on double occupancy

\$6,130 per person, based on single occupancy

All prices are per person, based on stated occupancy and include items listed under tour inclusions.



TOUR HIGHLIGHTS

PRIVATE GROUP WHALE WATCHING EXCURSION

Learn firsthand what it is like to be a whale researcher during this special offering with Pacific Whale Foundation's marine biologists out of Lahaina Harbor. This unique adventure includes a 2-hour whale watch with our Certified Marine Naturalist. This experience offers the opportunity to interact with our naturalists onboard to gain a better understanding about these giants of the sea, as well as how and what data collection our researchers are gathering. Our naturalists will provide you with expert commentary about humpback whales and the various behaviors being exhibited by these amazing giants during your tour. Every tour is different and amazing, so come out with us on this unique adventure.

PRIVATE GROUP 'ĪAO VALLEY AND MAUI OCEAN CENTER TOUR

Discover Maui's natural beauty and cultural heritage with a scenic visit to historic 'Īao Valley, where lush rainforest views surround the iconic 'Īao Needle and a local guide shares the site's significance as a sacred place for Hawaiian royalty. The experience continues at Maui Ocean Center, where guests explore immersive exhibits highlighting Hawai'i's unique marine life, conservation efforts, and deep connection to the sea—all at a relaxed, self-guided pace.

PRIVATE GROUP SUNSET COCKTAIL SAIL

Relax and enjoy a delicious assortment of pupus while sipping a beverage as you embrace the unbeatable Maui sunset and breathtaking West Maui coastal views. On this 2-hour relaxing sunset cruise, you will enjoy the thrill of sailing between the islands of Maui, Molokai and Lanai.

ACCOMMODATIONS

HYATT REGENCY MAUI RESORT & SPA

Discover a 40-acre oceanfront escape at Hyatt Regency Maui Resort and Spa, nestled on the peaceful, serene end of Kā'anapali Beach. Experience award-winning beachfront accommodations and endless Maui activities. Splash into a lagoon pool with a 150-foot waterslide and interactive children's splashpad, enjoy African penguin presentations, Hawaiian cultural activities such as lei making and Maui's most exciting lu'au. Unwind with ocean view yoga, massages at Maui's only oceanfront spa, and gourmet island style dining. Near our resort hotel you'll find Whaler's Village, world-class golf courses and unique local tours. Spacious rooms, suites and connecting rooms offer comfort for every type of traveler.



TERMS & CONDITIONS

RESERVATIONS All reservations will be handled directly with Carrousel Travel.

NOT INCLUDED Airfare, air taxes and fees, passport fees, airline baggage fees, meals (unless otherwise indicated in the itinerary), optional sightseeing, phone calls, travel insurance, gratuities for drivers and guides on excursions, or any other items not specifically mentioned as included in the itinerary.

GROUP AIRFARE Special group airfare will be available approximately 330 days prior to departure. Details will be provided as soon as it is available.

DEPOSIT \$1000 per person due at time of booking

SECOND DEPOSIT \$1000 per person due by August 14, 2026

FINAL PAYMENT Due by November 6, 2026

CANCELLATION POLICY Cancellations must be received in writing and are effective upon receipt by Carrousel Travel. The following cancellation fees will apply.

From 1st deposit through March 27, 2026: No penalty for cancellation

From March 28, 2026 through June 12, 2026: \$500 per person cancellation fee

From June 13, 2026 through August 14, 2026: \$1000 per person cancellation fee

From August 15, 2026 through November 6, 2026: \$2000 per person cancellation fee

From November 7, 2026 through departure date: No refund

TRAVEL INSURANCE Trip cancellation insurance is available and strongly recommended. Details are available upon request.

PLEASE NOTE Regardless of whether you have signed the agreement on your registration form, retention of your Itinerary/Invoice shall constitute acceptance of all the provisions listed here as well as those terms and conditions set forth in the announcement and brochures of the tour/package, charter, cruise or service.

PROOF OF IDENTITY A valid passport or Real ID is required for airline travel. Please ask your travel consultant for assistance if you are a citizen of another country.

RESPONSIBILITY Carrousel Travel purchases transportation, hotel accommodations and other services from various suppliers that are not subject to its immediate control. Carrousel Travel cannot, therefore, be liable for any personal injury or property damage or personal loss in connection with any service which may occur due to (1) any act or omission of such a supplier, or (2) defects in or failures of any aircraft, vessel, automotive vehicle or other means of transportation that is not under their control, or (3) any circumstances arising as a result of military or political action, terrorism, weather, acts of God, epidemiological events or any other circumstances over which Carrousel Travel has no control. Carrousel Travel reserves the right to alter, change or omit any part of the itinerary as they deem necessary or desirable, and to pass on to participants any expenditures or losses caused by delays or events beyond their control.

SUPPLIER DEFAULT/BANKRUPTCY If a supplier declares bankruptcy, cancels or postpones service or otherwise fails to provide or perform the services you have purchased, it is the supplier, and not the travel consultant, that is legally responsible to you. Refunds or reparations must come directly from the supplier or the bankruptcy court. Carrousel Travel will do their best to assist you.

For more information or to reserve your spot, visit:

carrouseltravel.com/KS95hawaii

Or contact Carrousel Travel:

612.866.2503 | 800.800.6508 | KS95@carrouseltravel.com